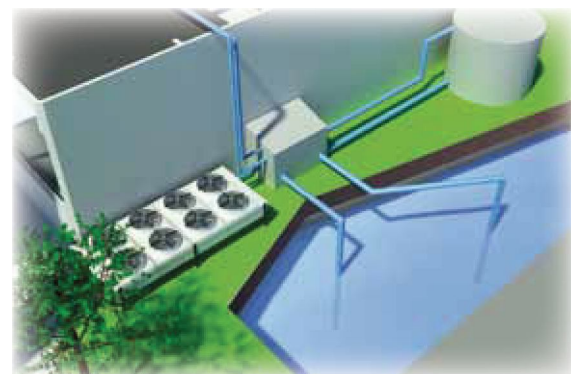
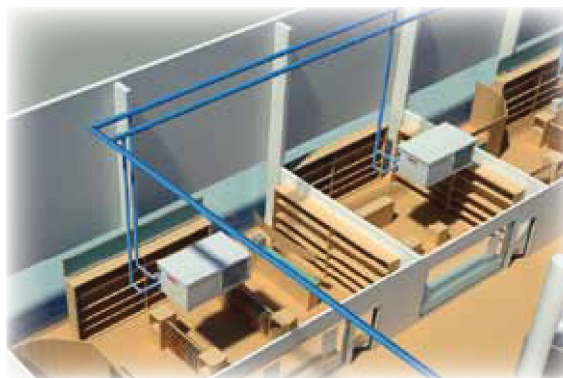


FWCK/FWHK . 4 → 20 kW

Horizontal water cooled packaged air conditioners



Main applications

- Stores in Shopping Gallery
- Small Offices in Building with Water Loop
- Medium & Large premises with zoning requirements

Why this choice?

- Independent Consumption & Maintenance in common building
- Optimize the floor space available: ceiling installation
- High efficiency solution
- Multispeed airflow
- Compact solution

General description

FWCK is a HVAC packaged unit made to regulate Cooling and Heating comfort requirement of **small locals integrated in large building**.

It is generally connected to water loop cooled by Dry-Coolers or Cooling Towers, although it can be part of a geothermal installation.

It exists in the following version:

- Horizontal design
- Cooling only
- Heat Pump



Main components

- Ductable Supply with Centrifugal fan
- High Quality Brazed plate Stainless steel plate heat exchanger
- Remote Control with ambient sensor
- Weekly programmer
- Galvanized steel sheet casing, non painted
- Ceiling fixtures
- Modular fan discharge position on site: side or front

Options

- Electrical heater
- Hot water coil
- Flow switch
- Water filter
- Presostatic valve (FWCK only)
- Low noise compressor jacket
- Main switch (up size 08)
- Return lock for the three phases models
- Return sensor
- Airflow configuration

General data

FWCK/FWHK		4	6	7	8	10	10	12	16	22
Cooling mode										
Cooling capacity ⁽¹⁾	kW	4	5,7	7,3	8,4	10,2	13	14,9	20,1	
EER		3,57	3,8	3,78	3,53	3,74	3,75	3,48	3,4	
Heating mode										
Heating capacity ⁽²⁾	kW	5,7	7	8,6	10,4	12,3	15	18,5	24,5	
COP		4,01	4,07	3,87	3,78	3,9	3,83	3,83	3,68	
Electrical data										
Voltage	V/Ph/Hz	230/1/50					400/3/50			
Maximum power	kW	1,59	2,63	3,23	3,86	4,51	5,53	6,61	8,7	
Refrigerant circuit data										
Compressors type		Rotary				Scroll				
Number of compressors		1								
Water cooled condenser data										
Nominal water flow	l/h	713	1019	1307	1505	1829	2340	2664	3618	
Water pressure drop - Cooling	kPa	16	35	61	83	45	75	35	72	
Water pressure drop - Heating	kPa	17	35	64,5	87,6	47,5	78,8	38,1	75,9	
Centrifugal fan										
Minimum airflow	m ³ /h	450	600	800	1000	1200	1500	1800	2250	
Maximum airflow	m ³ /h	1050	1550	1400	2350	2250	3100	3100	4500	
Maximum available static pressure ⁽³⁾	Pa	80	140	100	120	100	120	120	210	
Acoustic										
Sound pressure level - Cooling (low/high speed) ⁽⁴⁾	dB(A)	44/47	42/49	44/45	51/52	49/50	47/50	46/49	-/56,5	
Sound pressure level - Heating (low/high speed) ⁽⁴⁾	dB(A)	44/47	47/49	44/45	51/52	50/50	47/50	46/49	-/56,5	

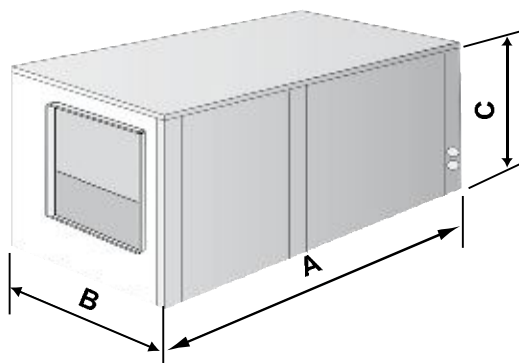
(1) Air inlet temperature : 27°C DB/19°C WB - Water inlet temperature : 30°C - With nominal water flow.

(2) Air inlet temperature : 20°C DB - Water inlet temperature : 20°C - With nominal water flow.

(3) For minimum airflow

(4) Measured at 2 meters from the unit

Physical data



FWCK/FWHK		4	6	7	8	10	12	16	22
A	mm	792	792	792	1083	1083	1503	1503	1503
B	mm	492	492	492	623	623	703	703	703
C	mm	440	440	440	465	465	505	505	505
Weight (cooling / heating)	kg	54/56	75/77	78/80	101/103	104/106	147/150	155/158	168/171